

# BioDoc-It Imaging System

Distributed by



800-767-0665 Fax:828-670-7020

## Dedicated fluorescence and colorimetric imaging in a stand-alone gel documentation

Fluor Camera and zoom lens

Screen tilts for optimum viewing angle and live preview of images

CompactFlash memory card port

No computer required with this system! If transfer of images to your computer is required, transfer images in a flash with the Compact Flash USB connector (PC or MAC).

Overhead LED white light with Hi/Lo settings

Touch pad control of:

- 17 integration times
- Save options: tiff or jpeg
- Oversaturation warning

Wide door for access and placement of samples on the transilluminator surface; UV automatically shuts off when the door is opened

Darkroom mounts onto the transilluminator

Choose from a large selection of benchtop models from single UV, 2UV, 3UV and FirstLight

**BioDoc-It Imaging System is an all in one gel documentation package.**

UV blocking viewport for quick sample viewing without opening the door

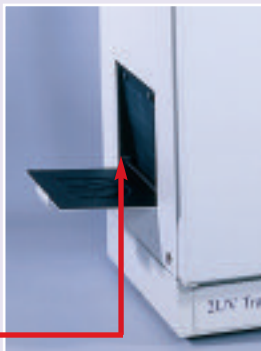
## System Components

- Darkroom, compact with wide access door
- Overhead white light
- Gel viewer window, UV blocking
- UV Transilluminator (variety available)
- Emission filter: EtBr (others available)
- CCD Camera (Fluor Camera) and zoom lens
- CompactFlash Memory Card and USB connector

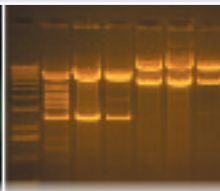
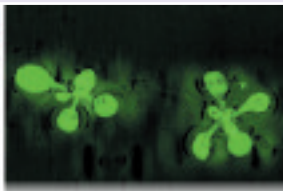
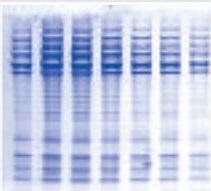
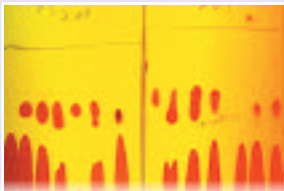
**Fluor Camera.** Monochrome non-cooled CCD camera for laboratories performing routine electrophoresis of DNA and protein gels.



EtBr filter fits in the easy access tray; other filters are available and interchangeable



"Three door" models include side access ports for positioning gels without opening the door



73 Ridgeway Road • Candler, NC 28715  
Phone 800.767.0665 • FAX 828.670.7020  
www.PhenixResearch.com

# VisiDoc-It Imaging System

Distributed by



800-767-0665 Fax:828-670-7020

## Basic fluorescence and colorimetric imaging in a compact stand-alone

1



Fluor Camera and lens connect directly to the processor

Camera mounts onto the light-weight hood enclosure area; allows images up to 20x20cm

Carry handles for portability



The VisiDoc-It is a basic, economical image capture and gel documentation system and allows researchers to use a transilluminator already in their laboratory. Two configurations are available: 1) with a hood enclosure or 2) with a stand.

No computer is required with this stand-alone system.

Processor, LCD screen, capture and integration options are the same as the BioDoc-It

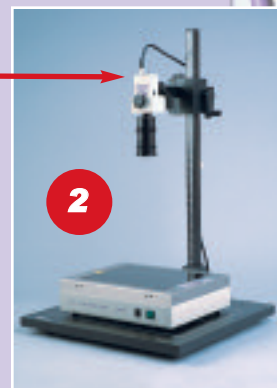
Transilluminator is ordered separately. Select from compact Benchtop UV or large format High Performance models.

BioDoc-It BioImaging System  
VisiDoc-It BioImaging System

Fluor Camera

Camera mounts to the camera stand

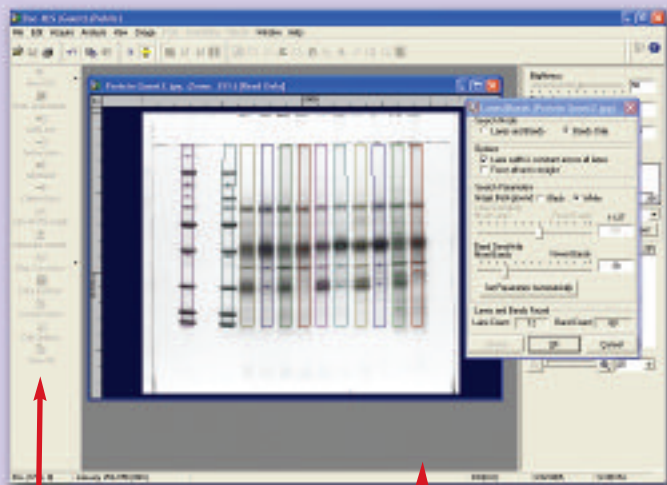
Optional transilluminator fits on the base; Choose from High Performance or Benchtop UV transilluminator models



2

# Doc-ItLS Analysis Software

## Basic analysis software for gels, plates and colonies



Users set tools bars for their preferences

Doc-ItLS software is compatible with Windows 2000 or XP Pro

Doc-It®LS is recommended for use with images captured with UVP's basic gel imaging systems: BioDoc-It, VisiDoc-It, DigiDoc-It, MultiDoc-It and ChromaDoc-It. Analyze the gels with the easy to use Doc-ItLS software featuring:

- One-touch button click for selecting lanes and bands
- Automated Colony counting
- Enhance images with tools including annotation, image noise reduction and pseudo color
- Support for 21 CFR Part 11 compliance with image history and user information
- Generation of easy to interpret quantitative data of lanes and bands
- Create and personalize reports
- Export data to external software applications



73 Ridgeway Road • Candler, NC 28715  
Phone 800.767.0665 • FAX 828.670.7020  
www.PhenixResearch.com